

Acoustima®

ACOUSTIC PANELS BY SEATUP EUROPE

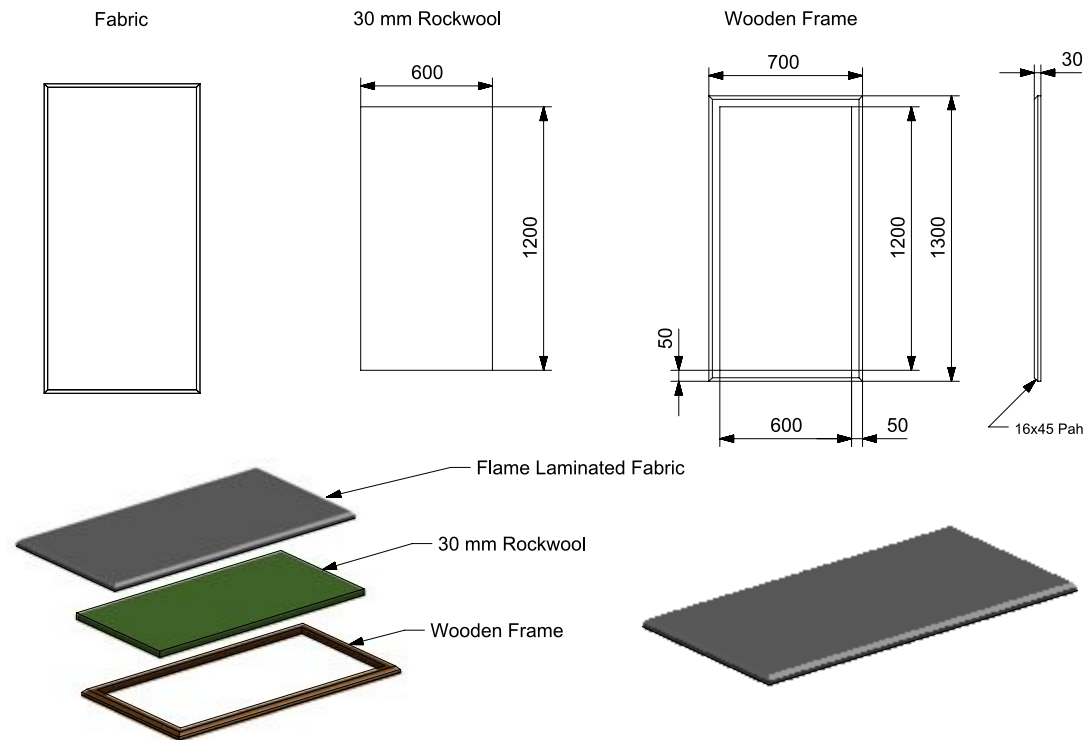


www.seatupeurope.com

www.acoustima.com



CLASSIC ACOUSTIC PANEL



Acoustic panel made of rockwool and coated acoustic fabric, for installation we developed unseen screws system for easy installation to the wall without necessarily need of a metal frame in the wall.

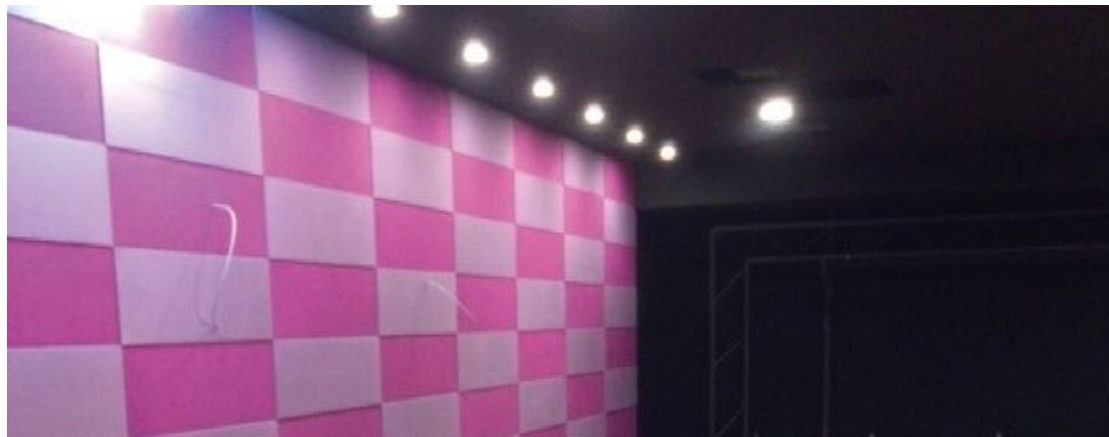
Our installation team will help you with easy and fast installation . recommended size for panels are: 600x600 , 600x1200, 600x1800

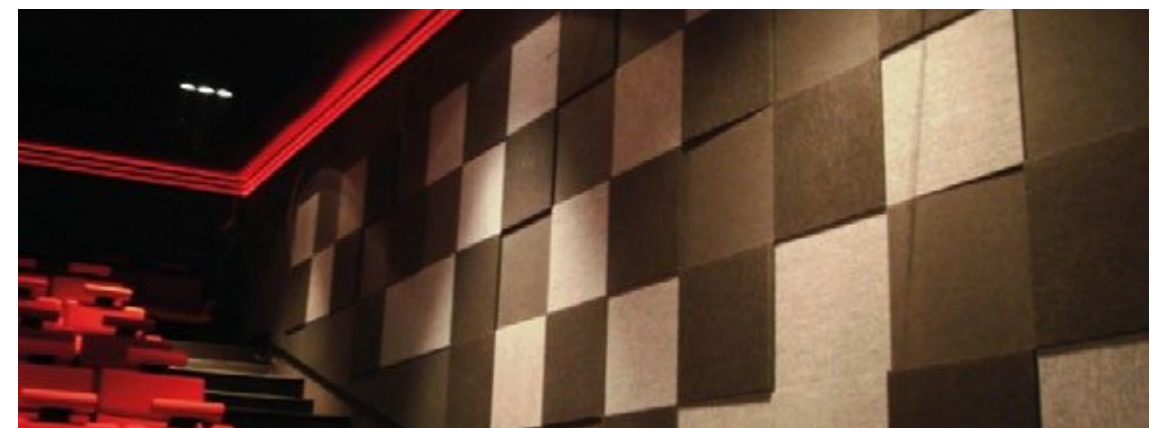
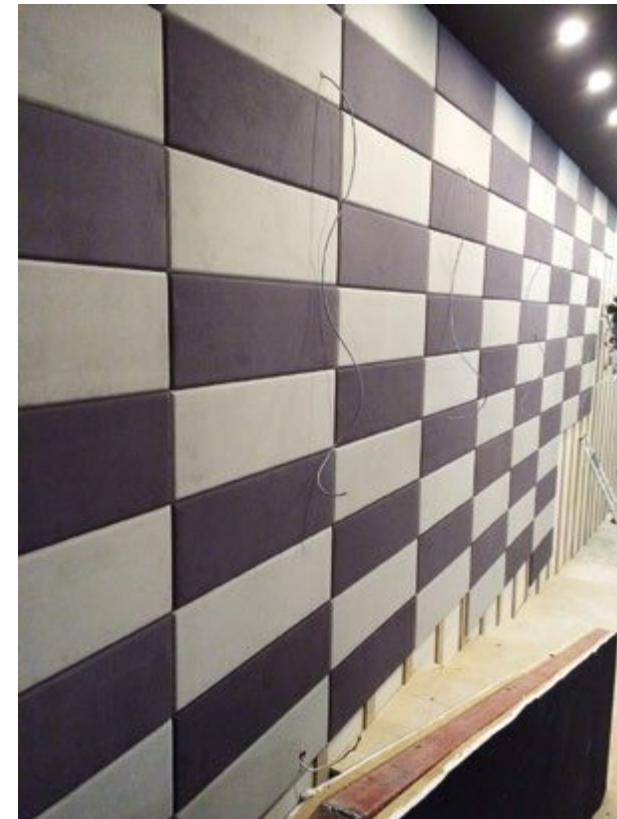
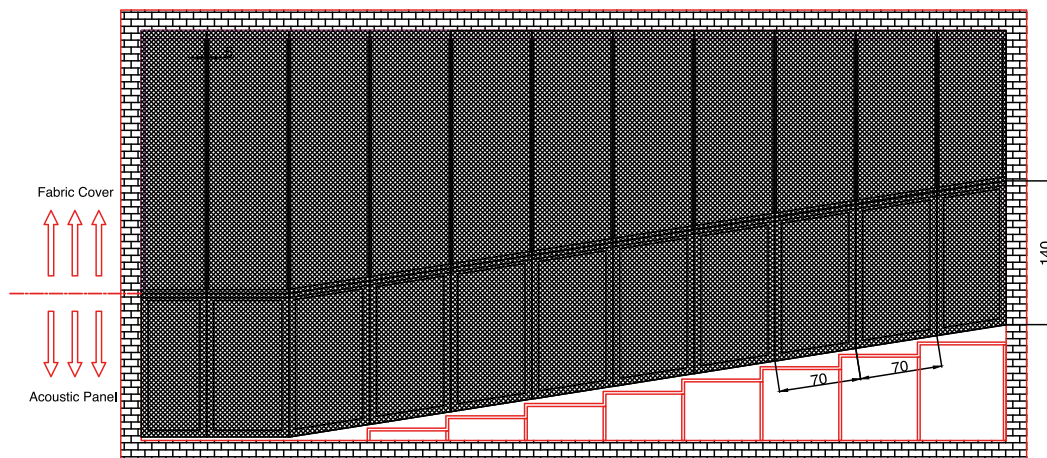
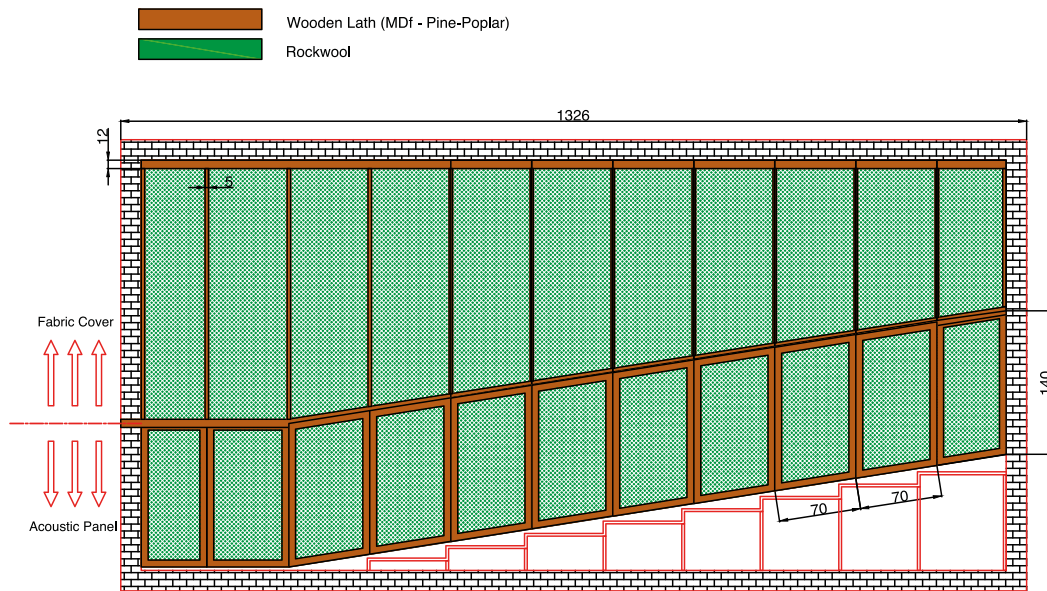
NRC 100 Hz: 0,12 - 1250 Hz : 0,98 - 5000 Hz: 0,78

Fire resistance: Class B s1 d0 According to TS-EN 13501-1:2013 standard Installation: Gluing or Cracking on the MDF frame.

Application area: offices, meeting rooms, shopping malls, cinema and theaters, educational institutions, TV and music rooms.

Acoustima® by Seatup Europe® offers the perfect Acoustic solution for hygienic environments and social areas





3D ACOUSTIC PANEL

Acoustima[®] panels made of:

Core material: molded PU foam (Anti flame polyurethane) made by cold injection machine. all the raw materials non flammable, free of carcinogenic substances, manufactured with high density. Surface can be with upholstery fabric or artificial leather.

Appearance and Design:

Surface can be flat and standard, or modern and decorative design such as variety of different geometric shapes, optional to be produced with custom made shapes as long as the amount per order is 500m².

Professional acoustic solution:

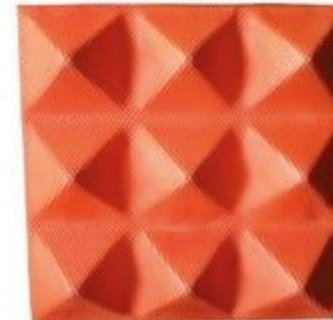
Acoustima[®] panels it's sound good! It's sound good because when the sound waves hits the surface of the panels it releasing back as a clear sound thanks to the high quality absorbing sound of the panels. In this way Acoustic[©] panels helps you to bring end to all problems of echo and mixed of noise which can be found in public building, auditorium, schools and education institutes.

Dimensions & Size:

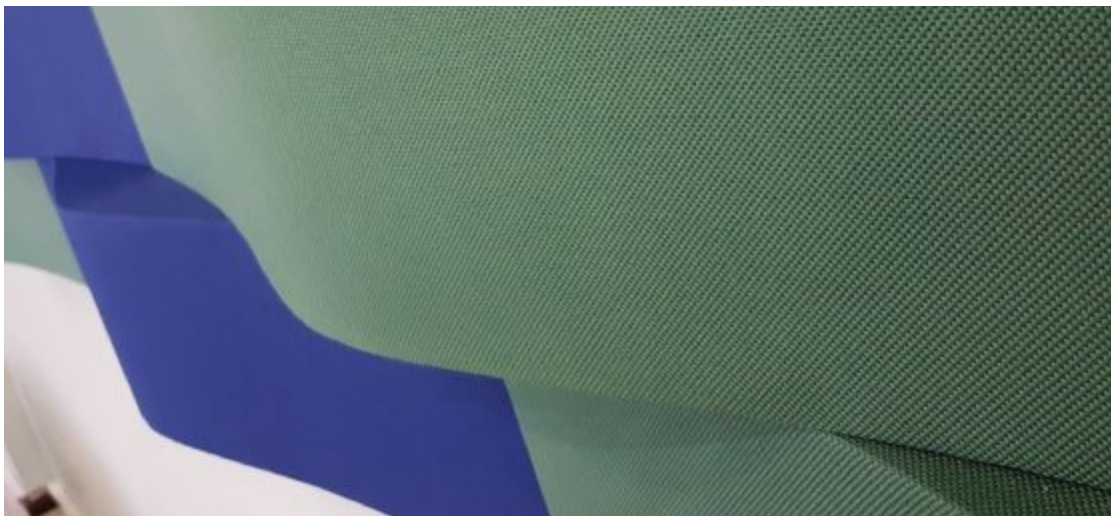
Beside the standard size of 30x30cm , 40x40cm or 60x60cm and thickness of 20mm or 40mm, Acoustima[®] panels size and dimensions can be modified according to any demand.

Mounting:

Acoustima[®] panels can be directly glued on the wall or the ceiling by Henkel CU25 or any other high quality silicone glue. It is a big advantage because you don't need to prepare any special carrier system for the Acoustima[®] panels. It can be applied also as mobile partitions system with a metal frame and wheel legs.

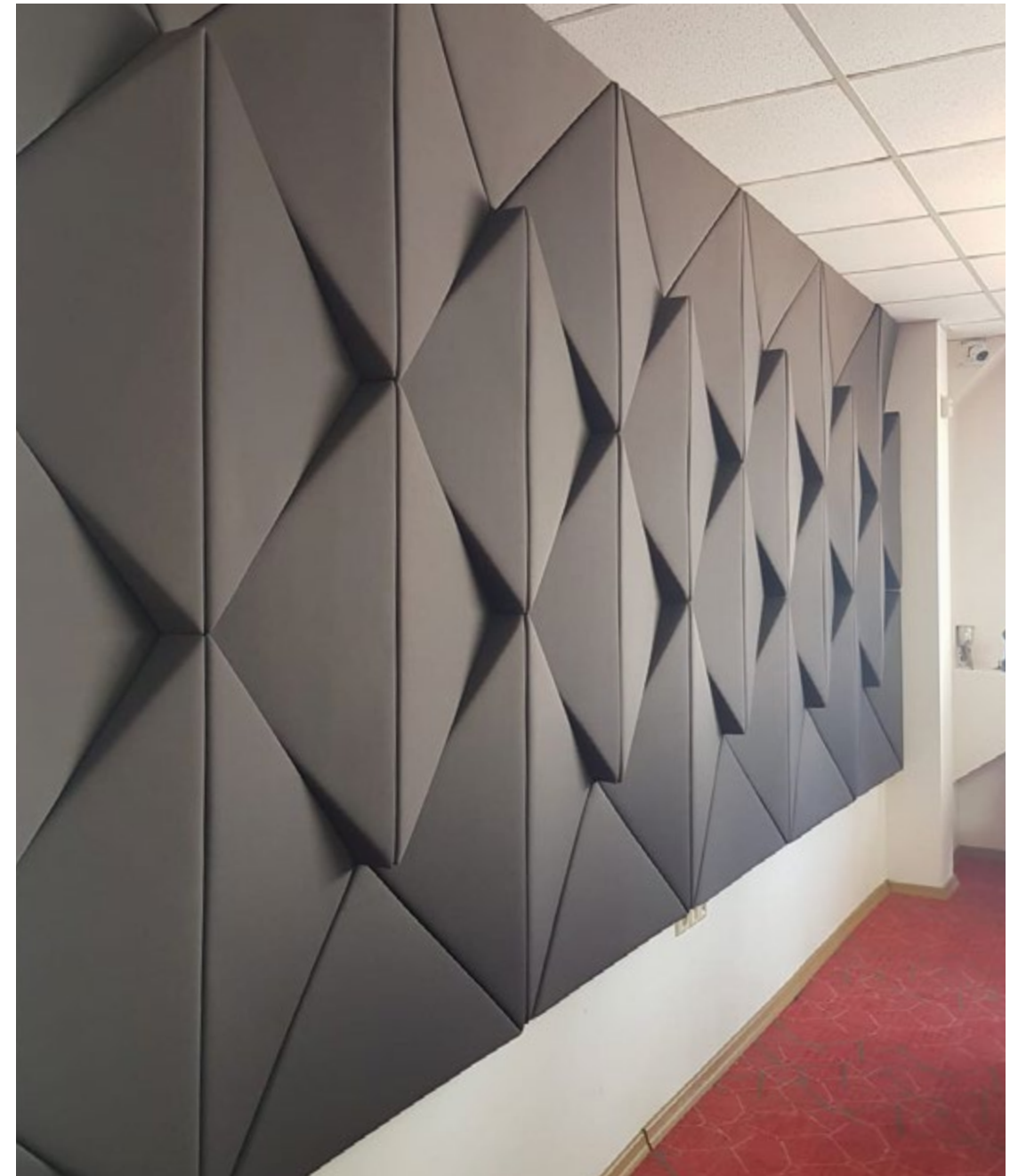
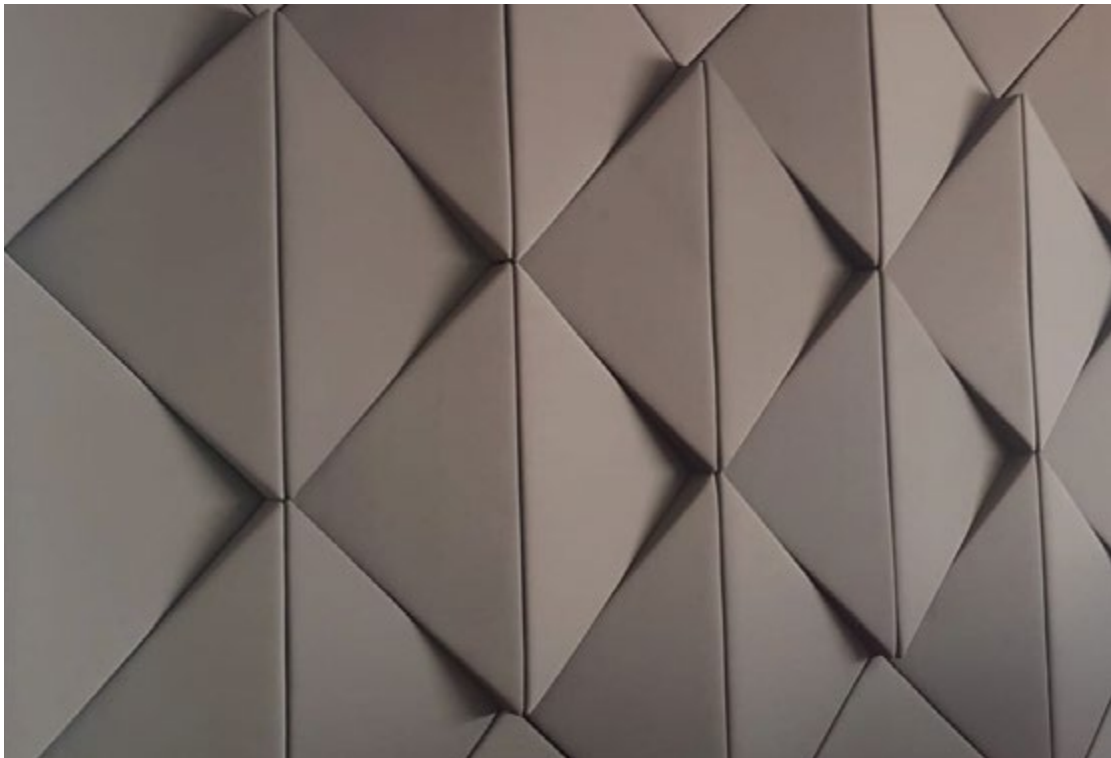


3D acoustic panels are the last word in modern design, they are giving the chance to combine aesthetic and creative design together with real professional acoustic solutions for public building.



What are the new innovation for Acoustic wall panels in 2020?

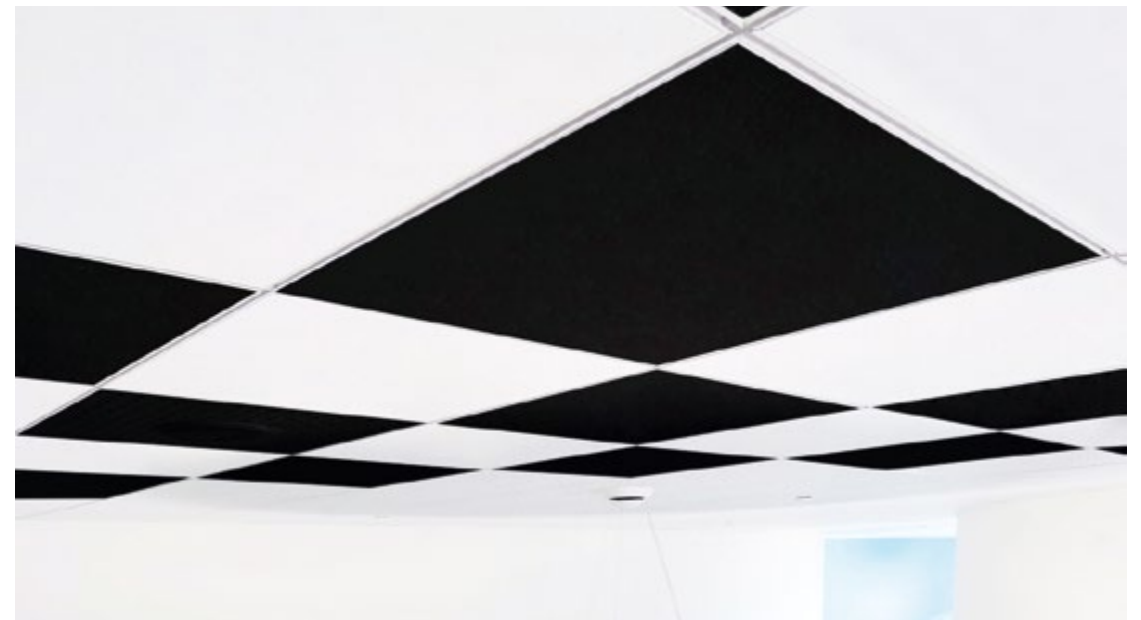
The 3D triangle shape which allow to design the wall with so many options, this panel will give the solution when you want to provide both hall with professional acoustic performance and with modern design.



CLASSIC CEILING

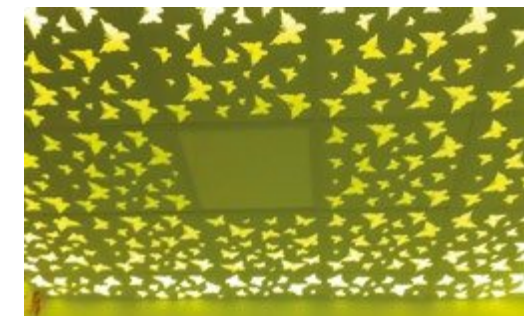


After installing the T-24 carrying system for ceiling panels, you may need simple 60x60cm Tiles for ceiling, it is common to use the gypsum board ceiling, but for those who are looking for higher acoustic solution and much more aesthetic improvement, the normal gypsum board will not be enough, therefore we offer Acoustic ceiling panels made of GlassWool coated anti flame paint available in any color.



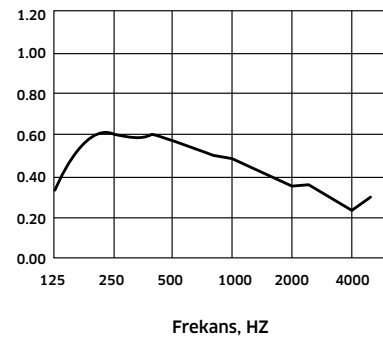
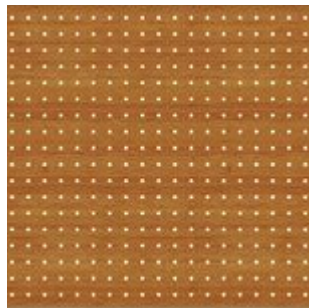
STRETCH LED CEILING

Stretched ceilings are the last word in modern design and they are the best way to create an atmosphere and any fantasy which you wish to have for the space which you design. Espacily in cinemas the guests which are arriving to the hall are waiting to see something special before the movie start, that is your time to blow up their mind with a special stretched ceiling and to give them an unforgettable experience Which will attract them to come again and invite their friends. It can be a ceiling which look like a sky at night with stars and moon, or it can be a ceiling that make the space to be look like a jungle full of trees, you decide how to make the "wow" effect on your audience so they will want to come back again and call their friends to see your cinema hall or any other public building that you may design. It is also important to add that beyond the design experience of the stretched ceilings they are also improve the acoustics in the space and also help to create the illusion of a larger space or a smaller space according to your needs and according to the effect you seek to create in the space you are designing.



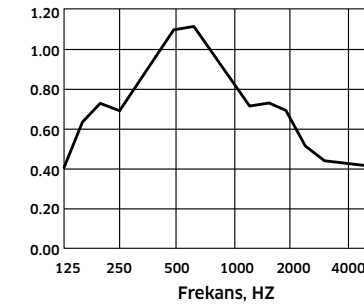
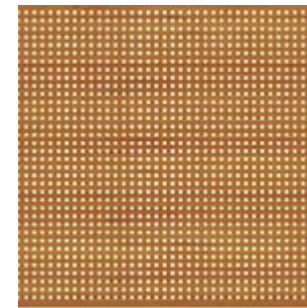
ACOUSTIC WOODEN PANELS

AC100



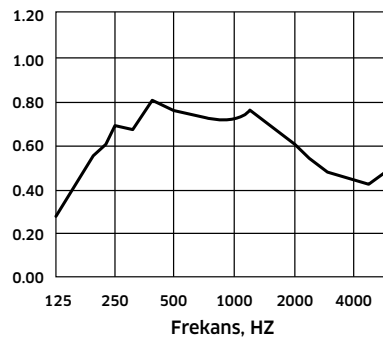
Euro	NRC
D	0.40

AC102



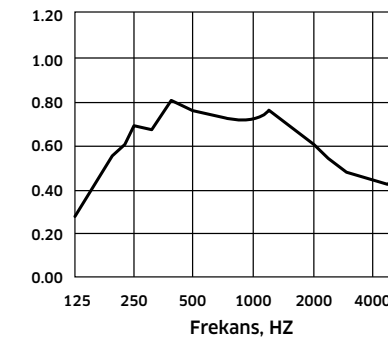
Euro	NRC
C	0.90

AC101



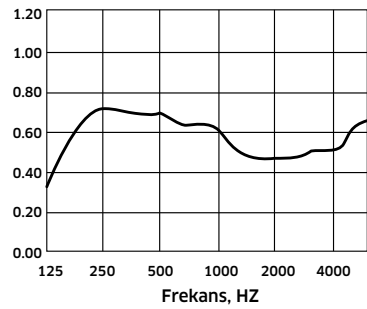
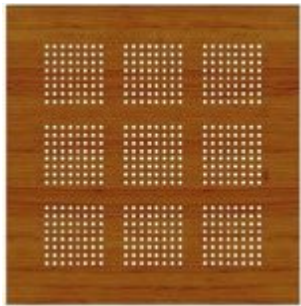
Euro	NRC
C	0.71

AC103



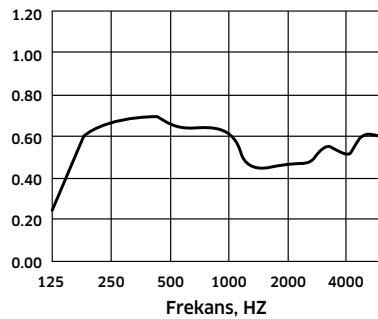
Euro	NRC
C	0.71

AC104



Euro	NRC
C	0.60

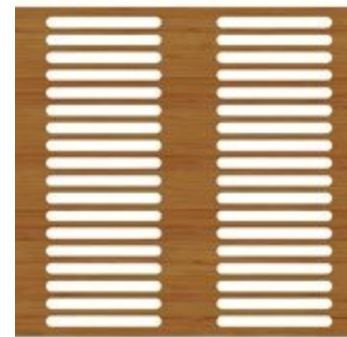
AC105



Euro	NRC
C	0.63

ACOUSTIC WOODEN PANELS - OUR SPECIAL COLLECTION

AC106



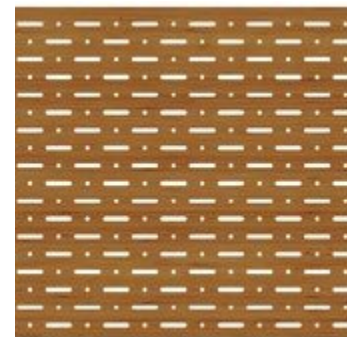
AC107



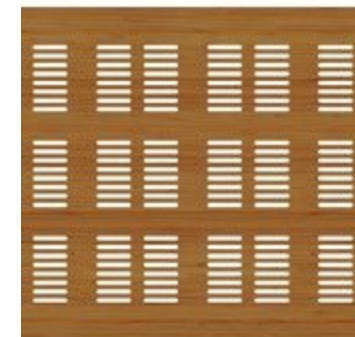
AC108



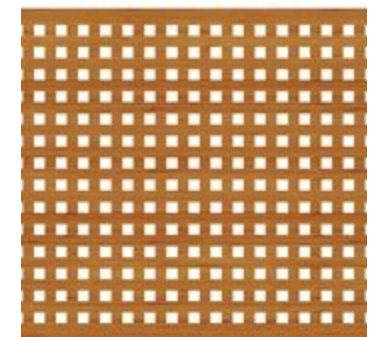
AC109

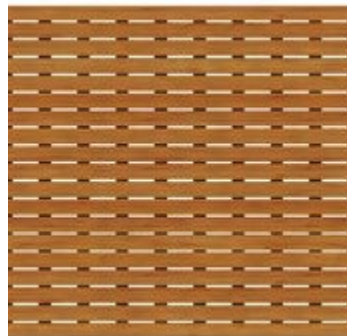
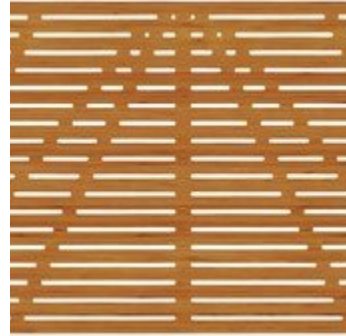
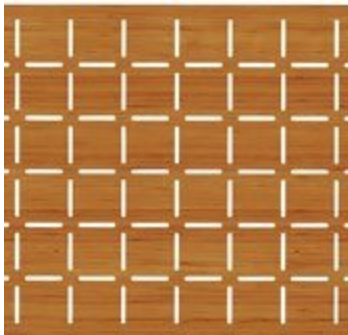
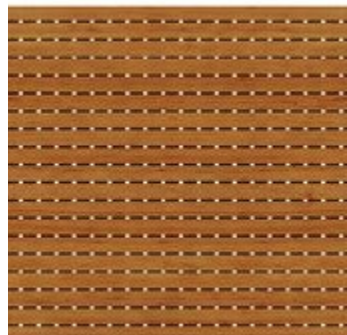


AC110



AC111



AC112**AC113****AC114****AC115****AC116****AC117****ACOUSTIC WOODEN PANELS FOR WALL**

Sizes: From 600×600 mm to 1500×3000mm. Special dimensions can be produced upon request.

Raw Materials: Painted, melamine and natural veneered MDF

Acoustic Fabric: Soundtex

Fire Class: DIN4102-B2, natural coating fire retardant polish application B1.

Carrier System: Tongue and Groove joint system.

Installation System: Customer can choose the installation system which he prefer, most common are the Classic method or the Omega method:

The classic method: Acoustic panels are mounted tongue and groove joint system. Panels are placed on the wall with air staple guns and strong glue.

The Omega method: Acoustic panels are mounted with aluminium profiles. These profiles are screwed to the box profiles and engaged with panels by screws.



ACOUSTIC WOODEN PANELS FOR CEILINGS

Sizes: From 600x600mm to 1500-300mm.

Special dimensions can be produced upon request.

Raw Material: Painted, melamine and natural veneered MDF Acoustic. Fabric: Soundtex .

Acoustic Fabric:

Fire Class: DIN4102-B2, natural coating fire retardant polish application B1.

Carrier Systems: T15, T24 and T15 grooved

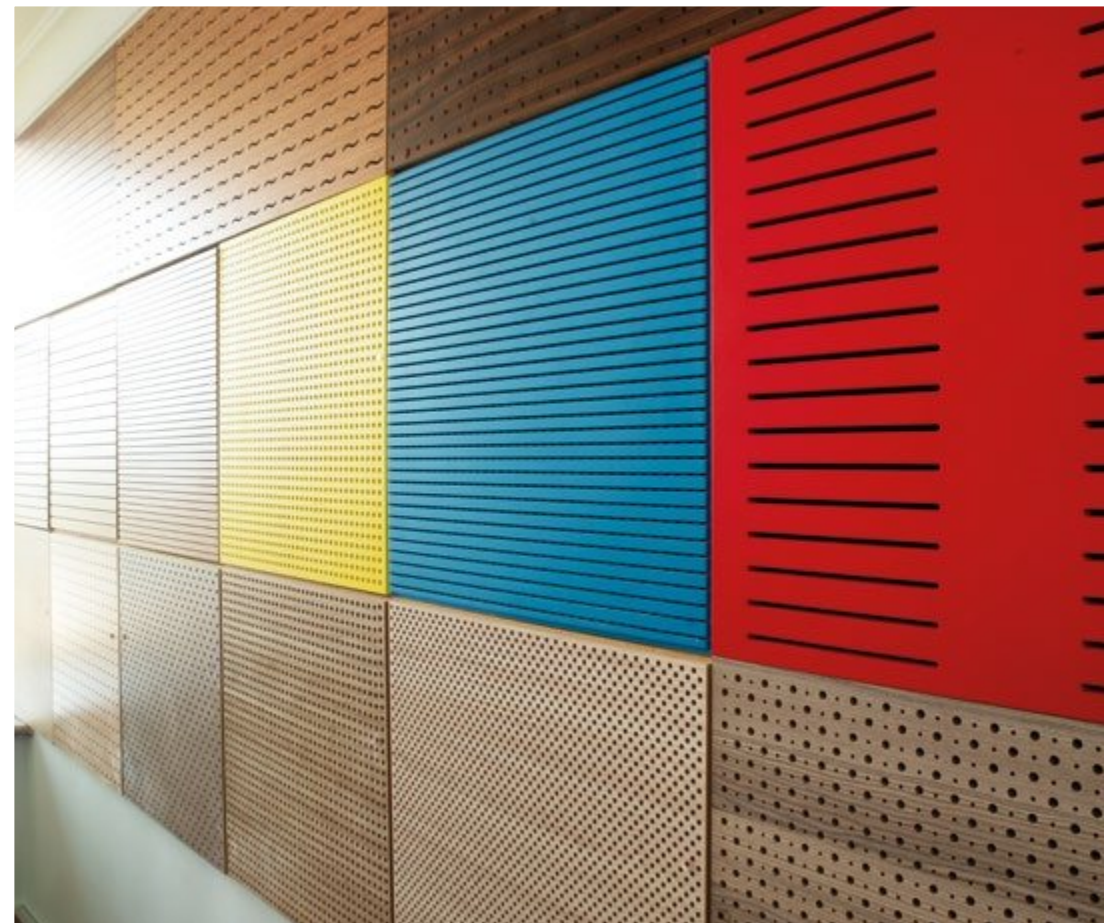
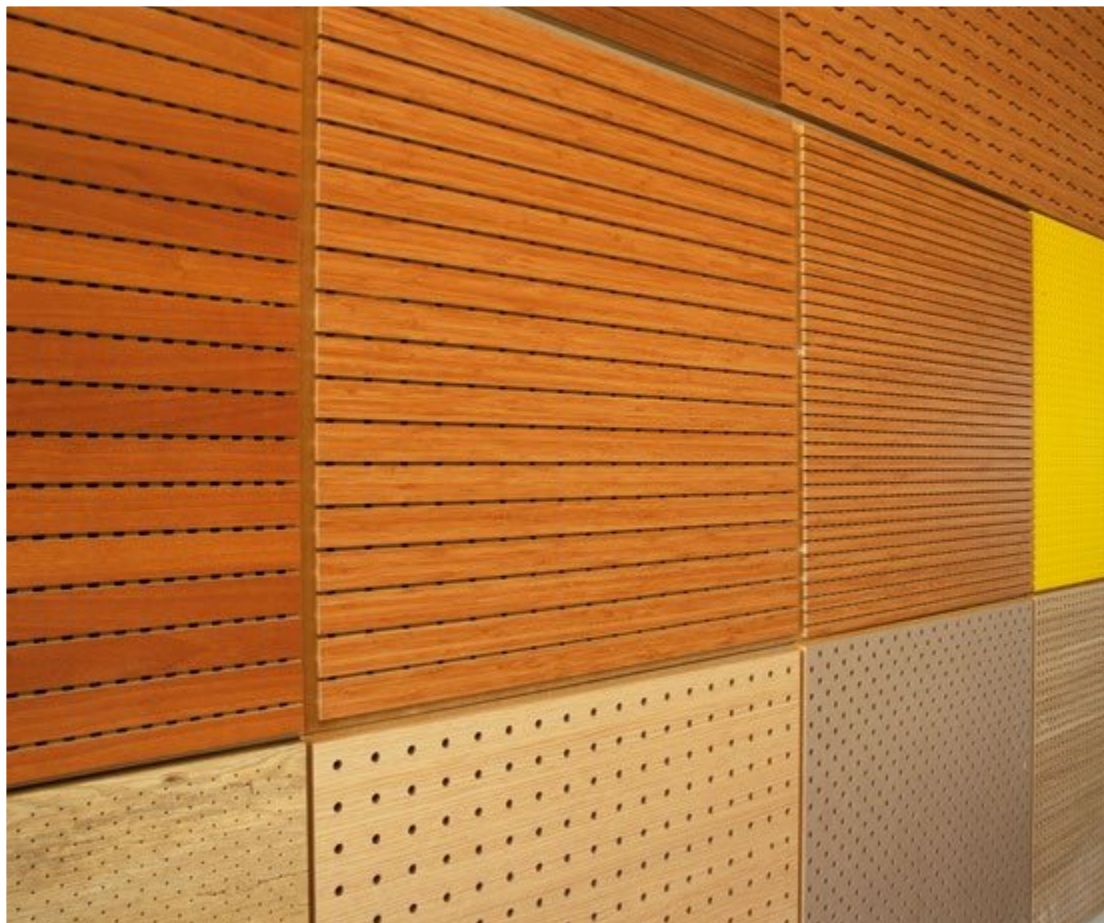
Installation system: Panels are placed from the top on the carrier system which you choose: T15, T24 or T15 grooved carriers. This carriers are visible between panels. Each panel is independently removable by hand without any help of tools which that provides quick and easy access to existing installation.

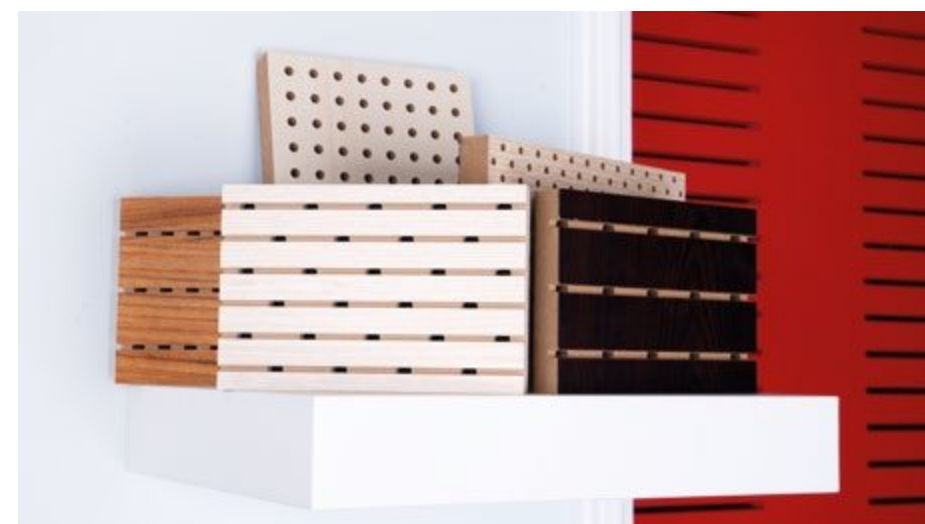
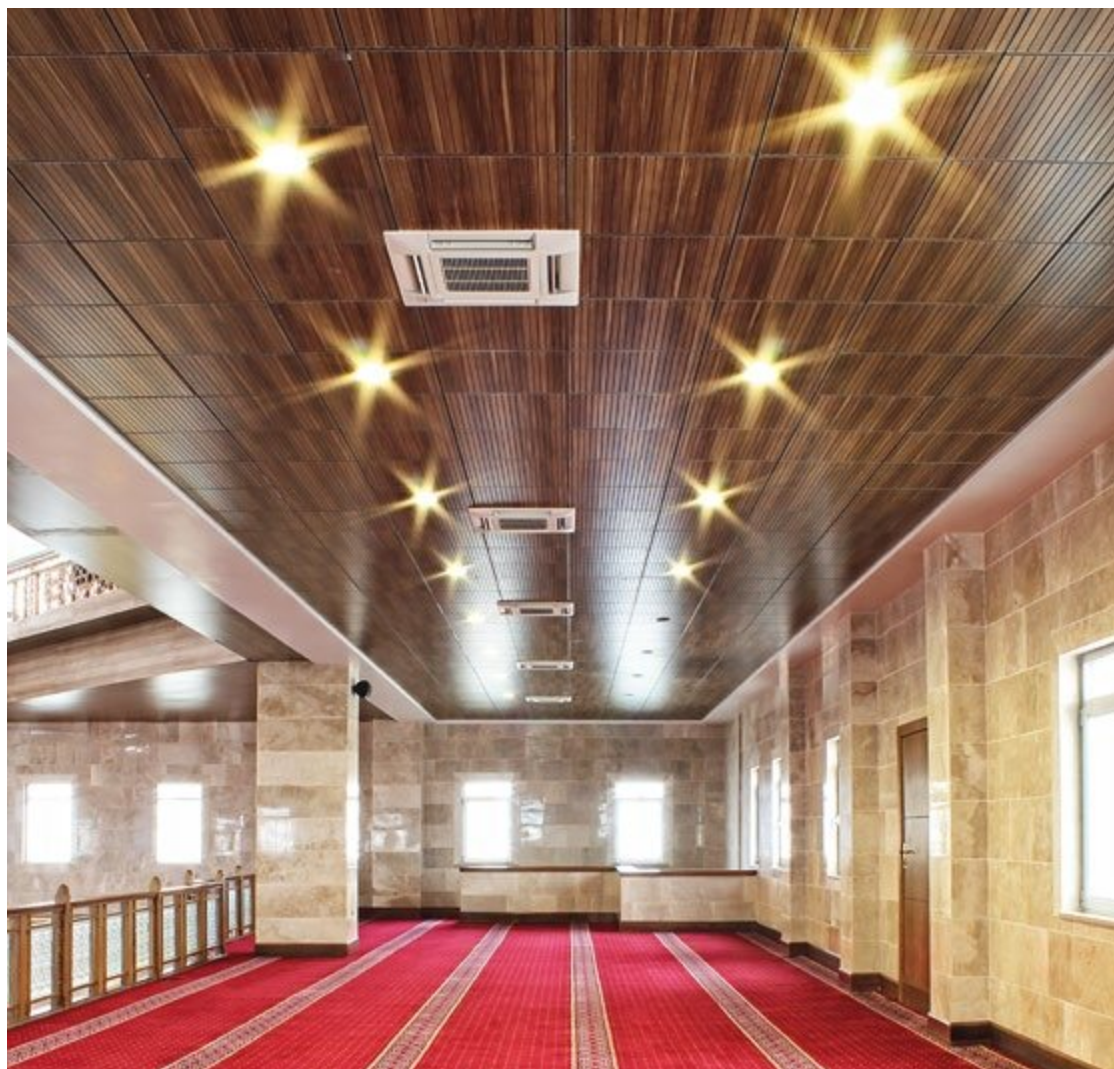


Usage Areas

Conference rooms, theaters, wedding halls, cinemas, opera houses, shopping malls, restaurants, radio and TV studios, offices, crowded offices, hotline centers, call centers, shooting ranges, fitness centers, call centers, swimming pools, wedding rooms, conservatory, study halls, hotel rooms, sound recording studios. Auditorium, home theatre, music halls and concert venues, hotels, offices and factories, public buildings, museums and galleries, hospitals and nursing homes, schools, colleges and universities.

Technical details will be shared according to your project demand we offers a widest range of acoustic wooden panels which is a fantastic combination of architectural elegance and certified acoustic performance.



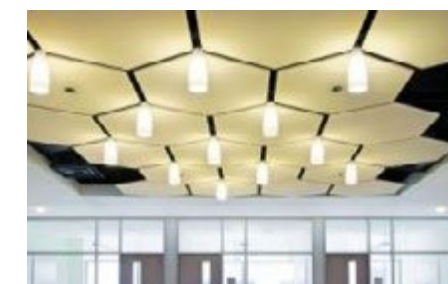
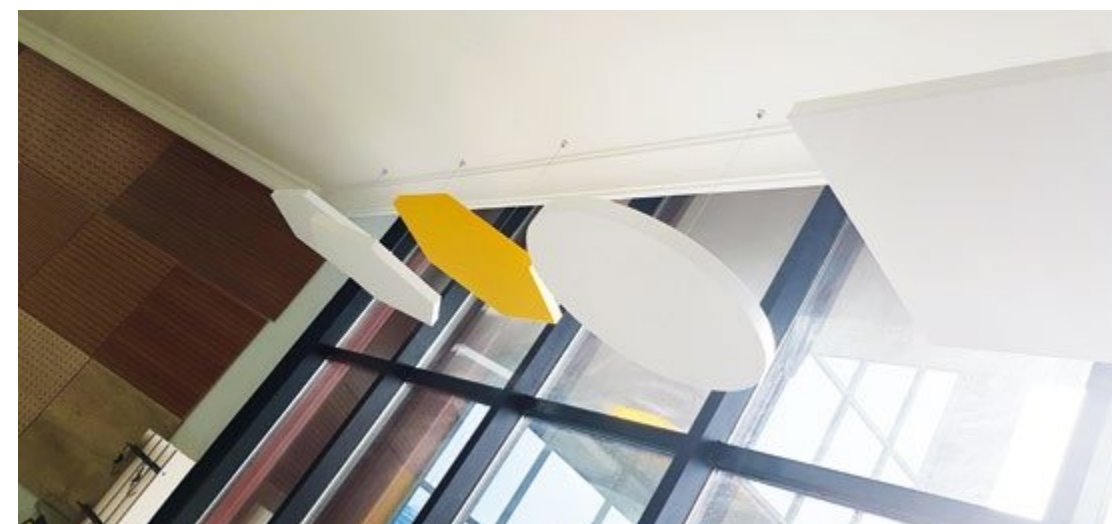


BAFFLE PANEL

Baffle and canopy panels are hanged from the ceiling and create a unique and surprising design and also help to reduce the noise problem in crowded places.



CANOPY PANEL



www.seatupeurope.com.tr

Seatup Europe | Manufacturing Seating Solutions Catalogue 2020 - 2021



Manufacturing Seating Solutions

SEATUP[®]
EUROPE

CONTACT INFO

Factory.

Cherno More Str. Kableshkovo, P.C. 8210,
Municipality of Pomorie, Burgas District, Bulgaria

Website.

www.seatupeurope.com

Mobil.

+90 542 719 67 12

Tel.

+359 87 9029626

Mail.

info@seatupeurope.com

export@seatupeurope.com